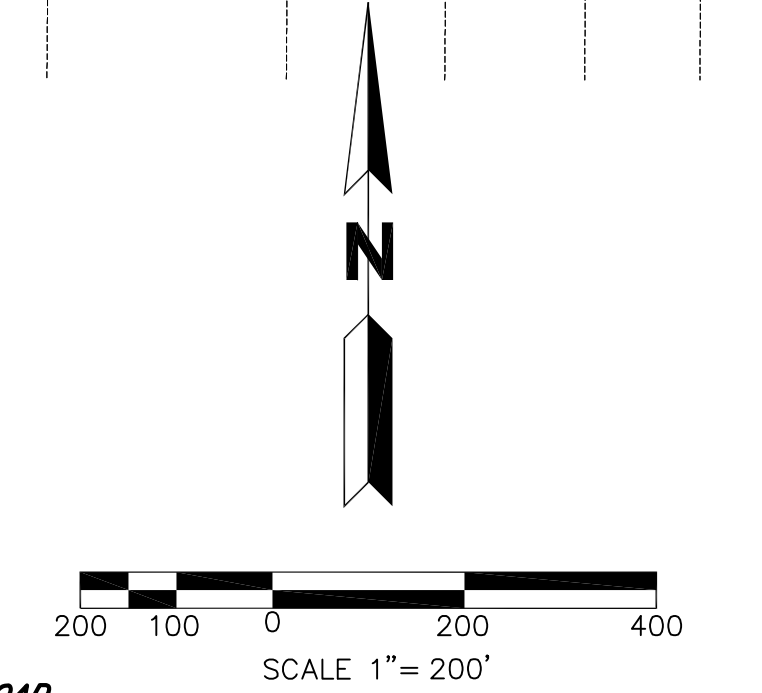
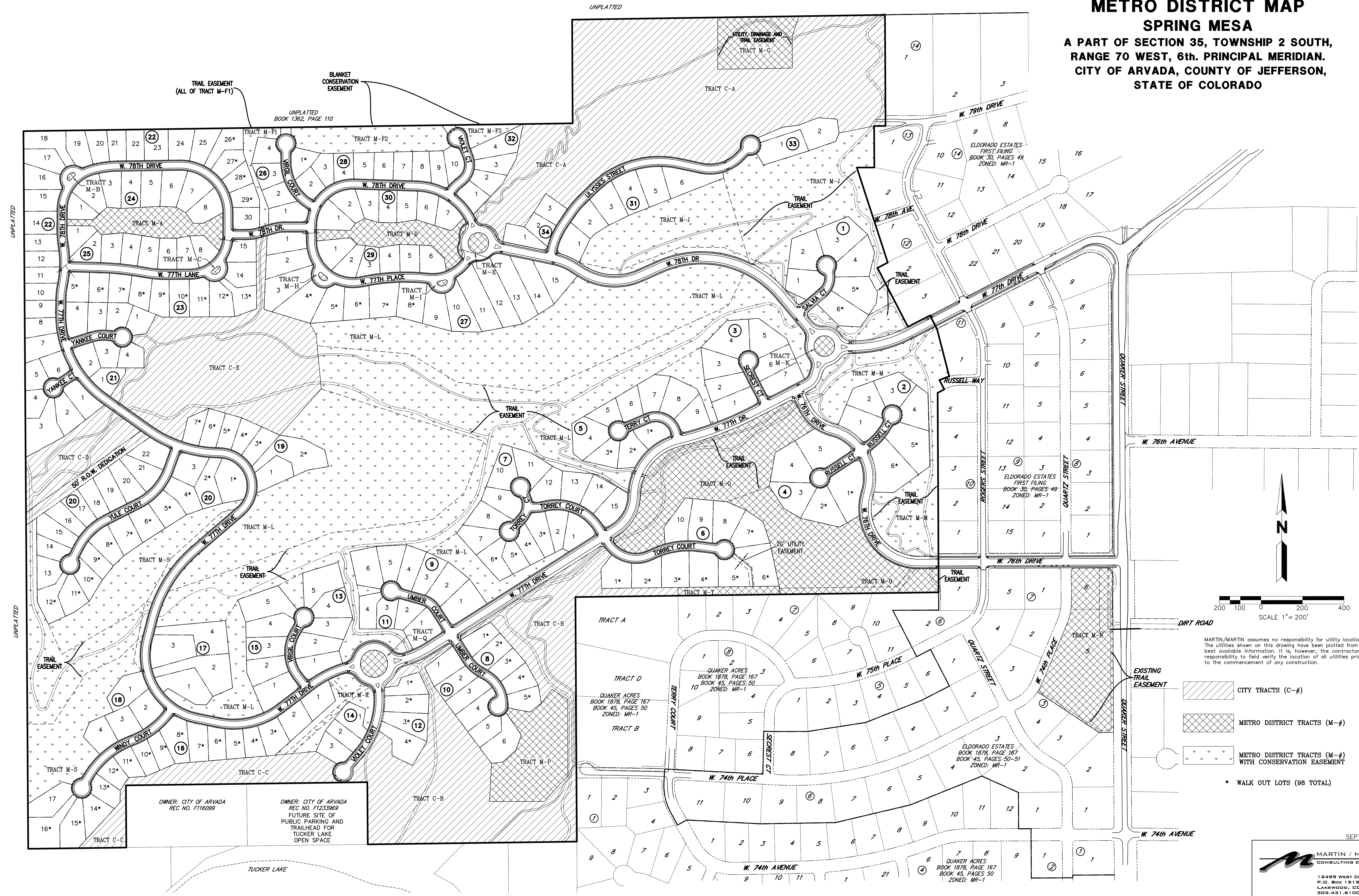


project manager: W.W.H.
 designed by: S.E.P.
 drawn by: R.S.S.
 job no.: 14144.C.02
 sheet no.: 2
 plot date: 09/19/08
 paper space: KILLY
 model space: KILLY
 main file: FDP02.DWG
 xreference: KILLY

METRO DISTRICT MAP SPRING MESA

A PART OF SECTION 35, TOWNSHIP 2 SOUTH,
 RANGE 70 WEST, 6th. PRINCIPAL MERIDIAN.
 CITY OF ARVADA, COUNTY OF JEFFERSON,
 STATE OF COLORADO



MARTIN/MARTIN assumes no responsibility for utility locations. The utilities shown on this drawing have been plotted from the best available information. It is, however, the contractors responsibility to field verify the location of all utilities prior to the commencement of any construction.

- CITY TRACTS (C-#)
- METRO DISTRICT TRACTS (M-#)
- METRO DISTRICT TRACTS (M-#) WITH CONSERVATION EASEMENT

* WALK OUT LOTS (98 TOTAL)

OWNER: CITY OF ARVADA
 REC NO. F116099

OWNER: CITY OF ARVADA
 REC NO. F1233969
 FUTURE SITE OF
 PUBLIC PARKING AND
 TRAILHEAD FOR
 TUCKER LAKE
 OPEN SPACE

SEPT. 19, 2008

 12499 WEST COLFAX AVE.
 P.O. BOX 151500
 LAKEWOOD, CO 80215
 303.431.6100
 FAX 303.431.4028